

Teaching Land-based Studies at Level 3?



Choose BTEC:

BTEC Nationals in Agriculture
BTEC Nationals in Animal Management
BTEC Nationals in Countryside Management
BTEC Nationals in Equine Management
BTEC Nationals in Forestry and Arboriculture
BTEC Nationals in Horticulture





Welcome to your Guide to the new BTEC Nationals in:

Agriculture

Animal Management

Countryside Management

Equine Management

Forestry and Arboriculture

Horticulture

Your Guide includes everything you need to know about what's new, why universities and employers are so excited about these new qualifications, and why around 1 in 4 students entering university in the UK do so with a BTEC.*

Contents

3	Why choose BTEC Nationals?
4	What's new
5	What BTEC Nationals can do for your students
6	BTEC Nationals in Agriculture
12	BTEC Nationals in Animal Management
18	BTEC Nationals in Countryside Management
24	BTEC Nationals in Equine Management
30	BTEC Nationals in Forestry and Arboriculture
36	BTEC Nationals in Horticulture
42	Your units explained
44-45	Assessment and Grading
46	Quality Assurance and Administration
47	Support summary
Back cover	Your next steps

*Source: UCAS Progression Pathways – Jan 2016

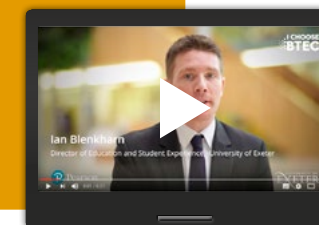
Why choose BTEC Nationals?

Young people taking their first step into a new career need the right blend of **technical and academic skills** to support them. And we know that employers and Higher Education are looking for highly skilled, job-ready individuals with a strong work ethic.

That's why we've created the new BTEC Nationals in collaboration with over 5,000 universities, employers and professional bodies with **employability at the heart**, so your learners can develop the skills and confidence they will need to step into a prosperous future.

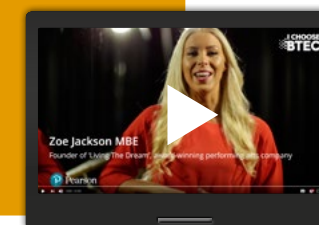
Why universities choose BTEC

[quals.pearson.com/
BTECprogressguide](https://quals.pearson.com/BTECprogressguide)



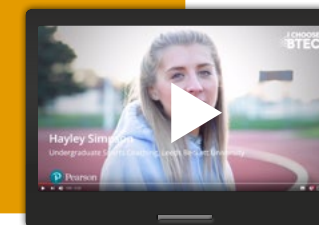
Why employers choose BTEC

[quals.pearson.com/
BTECprogressguide](https://quals.pearson.com/BTECprogressguide)



Why students choose BTEC

[quals.pearson.com/
BTECSuccessguide](https://quals.pearson.com/BTECSuccessguide)



95% of universities and colleges in the UK now accept BTECs

– including Oxford University

(Source: UCAS, Meeting the Needs of Learners, Providers and Universities (2016))

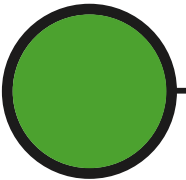
The number and proportion of students entering university with a BTEC has doubled between 2008 and 2014 from 44K to 85K

(Source: UCAS, Meeting the Needs of Learners, Providers and Universities 2016)

BTECs have the highest rates of learner progression, than any other vocational qualification particularly to Higher Education

(Source: Department for Business, Innovation & Skills report on 'Social Mobility: Contribution of Further Education and Skills')

See next page for what's new



What's new

Your new BTEC Nationals retain their familiar practical, unit-by-unit approach and have evolved to reflect feedback from Higher Education, employers and teaching professionals.

This means your new BTEC Nationals now include:

1 Combination of assessment styles

Learners have the opportunity to demonstrate their knowledge, skills and understanding in a range of work-related contexts – **see page 44** for further details.

- **Internal assignments:** Work-related assignments set and marked by the centre.
- **External Tasks:** Practical, work-related tasks, set and marked by Pearson.
- **Written exams:** Written answers to practical questions set and marked by Pearson.
- **Synoptic units:** Students can demonstrate that they can apply skills, knowledge and techniques learned across the qualification. See individual unit chart pages for each sector for details of synoptic units.

2 Larger foundation of mandatory units

Gives universities and employers confidence that BTEC-qualified candidates have reached a consistent level of core knowledge and skills for their sector.

3 Even more support

We've listened, and have put together our most comprehensive support package yet, including more examples of exemplar materials.

4 Employer involvement

Real work-based experience for those choosing Tech level qualifications – see individual qualification sections in this guide for full details.

What BTEC Nationals can do for your students

Your new BTEC Nationals offer learners **modern, work-related qualifications** which open the door to higher education and a career because they:

- are each designed with a **clear purpose to support defined progression** routes into higher education or employment
- **build high-level skills** such as teamwork, creative thinking and presentation skills.
- develop **independent research and study skills** essential for success at university.

"BTEC helps students get the skills that today's employers are looking for... BTEC is considered the gold standard of vocational learning."

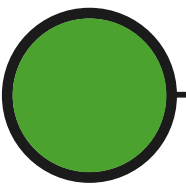
Peter Jones, CBE

Watch this short video for more from Peter Jones at quals.pearson.com/ichooseBTECGuide



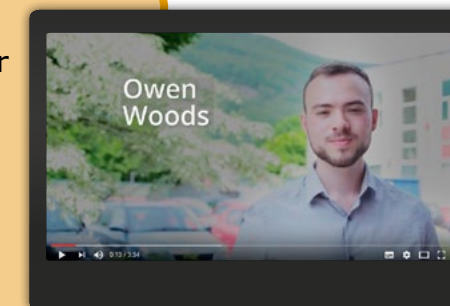
"BTEC students coming with vocational skills can really add something extra to the university setting."

Ian Blenkharn, Director of Education and Student Experience, University of Exeter.



See some great BTEC success stories and hear from our 2106 BTEC Award winners at quals.pearson.com/BTECAwards16Guide.

BTEC AWARDS 2016



Want to know more?

Visit ichoosebtec.com/Guide to see what universities, employers and students have to say about BTEC.

See next page to find out what BTECs can do for your students

For full details of your BTEC Nationals in Agriculture see next page

Your new BTEC Nationals in Agriculture

Your new BTEC Nationals in Agriculture offer Tech Level qualifications that can be studied alongside other level 3 qualifications such as A levels or other BTEC Nationals as part of a larger programme of study, or as the main focus of study. All sizes attract UCAS points and are widely recognised by universities and employers.

They provide:

- **flexibility** for your students to progress to larger-size qualifications
- opportunities for students to showcase their skills through **practical assessments**
- the **underpinning knowledge and skills** needed to meet industry requirements
- the **transferable and high-order skills** so highly regarded by HE and employers
- **Tech Level qualifications** with clear purpose and progression to higher education or employment.

Tech Level qualifications

Tech Level qualifications are for students wishing to progress directly to employment or apprenticeships through specialist study, or choose to go on to higher level study.

Students will have the opportunity to:

- **choose between different qualification sizes** so they have the option to study full or part-time or take a BTEC alongside other level 3 qualifications such as A levels
- equip themselves with **specialist knowledge and skills** for their chosen career path
- **develop transferable knowledge and skills.**

HE and Employer support

See the list of organisations who've written letters of support for your new BTEC Nationals in Agriculture at: quals.pearson.com/BTECNatsAgriculturelettersGuide



Choice of course sizes

Here's an overview of the Tech Level-style qualifications for Agriculture. You'll see we've listened to feedback from employers and HE, so there are more mandatory units to ensure all learners master the same foundation of essential knowledge and skills. And, there's still the traditional range of optional units to complete the course. These Tech Level qualifications offer your learners the chance to prepare for a career in Agriculture by gaining hands-on experience during their course. Choose the size that's right for you – and then explore your units in more details on page 8.

Extended Certificate (360 GLH)	Foundation Diploma (540 GLH)	Diploma (720 GLH)	Extended Diploma (1080 GLH)
Equivalent in size to 1 A level Tech Level TOTAL: 5 UNITS	Equivalent in size to 1.5 A levels Tech Level TOTAL: 7 UNITS	Equivalent in size to 2 A levels Tech Level TOTAL: 11 UNITS	Equivalent in size to 3 A levels Tech Level TOTAL: 14 UNITS
5 MANDATORY UNITS	6 MANDATORY UNITS	8 MANDATORY UNITS	9 MANDATORY UNITS
0 OPTIONAL UNITS	1 OPTIONAL UNIT	3 OPTIONAL UNITS	5 OPTIONAL UNITS
A broad study of the agriculture sector.	Covers the fundamentals of the agriculture sector.	In-depth study of the sector.	Two-year full time course.
Supports progression to:	Supports progression to:	Supports progression to:	Supports progression to:
<ul style="list-style-type: none"> • Further or higher education – when studied alongside other level 3 qualifications • Apprenticeship/employment in roles such as general farm worker, agricultural/crop technician and trials officer. 	<ul style="list-style-type: none"> • Further or higher education – when studied alongside other level 3 qualifications • Apprenticeship/employment in roles such as assistant herd/crop person and assistant machinery operator. 	<ul style="list-style-type: none"> • Higher education – when studied alongside other level 3 qualifications • Direct employment in roles such as herd/stock person, machinery operator and arable technician. 	<ul style="list-style-type: none"> • Higher education • Direct employment in Agriculture sector in roles such as stock/herdsman, dairyman, livestock/crop contractor, agricultural technician, tractor driver, farm mechanic and unit manager.

Scheduled first teaching:
September 2017**

Scheduled first teaching:
September 2017**

Scheduled first teaching:
September 2017**

Scheduled first teaching:
September 2017**

**To be submitted for DfE performance measures.

The **Diploma (720 GLH)** and **Extended Diploma (1080 GLH)** qualifications are currently in development. The information here is not final but will give you a guide to the format of these two qualifications.

Please check website for latest information quals.pearson.com/BTECNatsAgriculture16Guide or sign up for updates at quals.pearson.com/BTECNats16updateGuide and we'll let you know when final content is available.

For full details of your BTEC Nationals in Agriculture see next page

Your choice of course sizes in detail - Mandatory units

Mandatory Unit titles	Assessment type	GLH	Extended Certificate (360 GLH)	Foundation Diploma (540 GLH)	Diploma (720 GLH)	Extended Diploma (1080 GLH)
			Tech Level	Tech Level	Tech Level	Tech Level
1. Professional Working Responsibilities	Task	120	MS*	M*	M*	M*
2. Plant and Soil Science	Written exam	120		M*	M*	M*
3. Agriculture Business and Income Generation Project	Task	120				MS*
4. Work Experience in the Land-based Sectors	Assignment	60	M	M	M	M
5. Estate Skills	Assignment	60	M*	M*	M*	M*
6. Crop Production	Assignment	60	MS*			
7. Farm Livestock Husbandry	Assignment	60	M*		MS*	M*
8. Land-based Machinery Operations	Assignment	60		M*	M*	M*
9. Managing Agricultural Environments	Assignment	60			M*	M*
27. Farm Operations	Assignment	60			MS*	

- Assignment – Set and marked internally
- Task – Set and marked by Pearson
- Written exam – Set and marked by Pearson
- O – Optional Unit

M – Mandatory unit
MS – Synoptic unit
* – Students must pass this unit (see page 42 for more details)

The Diploma (720 GLH) and Extended Diploma (1080 GLH) qualifications are currently in development. These are not the final units but will give you an idea of what we are planning to include.

Please check website for latest information quals.pearson.com/BTECNatsAgriculture16Guide or sign up for updates at quals.pearson.com/BTECNats16updateGuide and we'll let you know when the final specifications are available.

Your choice of course sizes in detail – Optional Units

Optional Unit titles	Assessment type	GLH	Extended Certificate (360 GLH)	Foundation Diploma (510 GLH)	Diploma (720 GLH)	Extended Diploma (1080 GLH)
			Tech Level	Tech Level	Tech Level	Tech Level
			N/A	Choose 1	Choose 2	Choose 5
5. Estate Skills	Assignment	60	O	O		
6. Crop Production	Assignment	60		O		
7. Farm Livestock Husbandry	Assignment	60		O		
10. Crop Handling, Storage and Quality Assurance	Assignment	60		O	O	O
11. Livestock Health and Diseases	Assignment	60		O	O	O
12. Developing a Land-based Enterprise	Assignment	60		O	O	
13. Poultry Production	Assignment	60		O	O	O
14. Sheep Production	Assignment	60		O	O	O
15. Beef Production	Assignment	60		O	O	O
16. Dairy Production	Assignment	60		O	O	O
17. Pig Production	Assignment	60		O	O	O
18. Land-based workshop practices	Assignment	60		O	O	O
19. Root and Vegetable Production	Assignment	60		O	O	O
20. Organic production	Assignment	60			O	O
21. Animal and Plant Genetics	Assignment	60				O
22. Managing Machine Purchases	Assignment	60				O
23. Combinable Crop Production	Assignment	60			O	O
24. Diversification	Assignment	60				O
25. Livestock Nutrition	Assignment	60			O	O
26. Forage Crops and Grassland Management	Assignment	60			O	O
27. Farm Operations	Assignment	60				O

See next page for information on assessment

Practical assessment

Your BTEC Nationals in Agriculture students will apply their learning through practical assessments in the form of internally assessed **assignments** and externally assessed **tasks** and **written exams**.

Your unit charts on pages 14 and 15 show how each unit may be assessed as well as the expected guided learning hours.

Here's a brief guide to your BTEC Nationals in Agriculture assessment:

1 Assignments – internally assessed by you

The same BTEC tried-and-tested teaching and assessment style teachers and students know and love.

For internally assessed assignments, you and your programme team draw up an assessment plan and create an assignment brief for your students to then carry out set tasks and create evidence around work-related scenarios.

Assignments can include research, projects, investigations, fieldwork and experiments and often link theory with practical exercises.

How we help you:

- We provide **authorised assignment briefs** – once you've verified these are suitable for your learners they are ready to use.
- You can download our **guide to writing assignments** if you prefer to create your own.
- We've an **assessment plan template** you can download to save you time.

Browse our step-by-step guide to delivering BTEC at quals.pearson.com/BTECstepbystepGuide and find out about all the support available on page 47 of this guide.

Learn more about assessment and grading

You'll find detailed unit and assessment information in your Specification at quals.pearson.com/BTECNats16and17Guide

Download your exam timetable at quals.pearson.com/BTECexamsGuide

2 Tasks – set and marked by Pearson

Unit 1: Professional Working Responsibilities

Mandatory unit for **all qualifications**.

A task set and marked by Pearson completed under supervised conditions following pre-released information enabling individual research up to 6 hours. The supervised assessment period is a maximum of 2 hours and can be arranged over 2 sessions in a period timetabled by Pearson. Written submission evidence.

Frequency: Twice yearly
First assessment window: May/June 2018

Unit 3: Agriculture project

Mandatory unit for **Extended Diploma qualifications**.

A supervised assessment task - final content to be confirmed.

Frequency: Twice yearly
First assessment window: May/June 2017

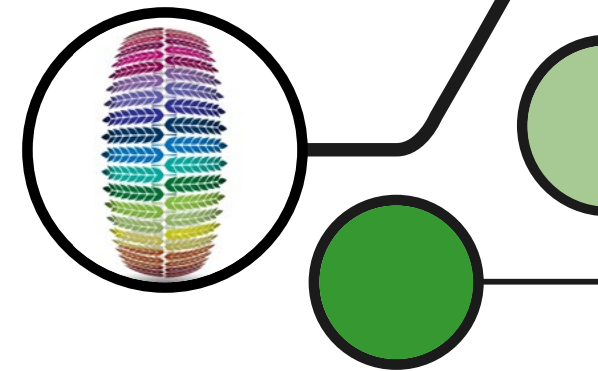
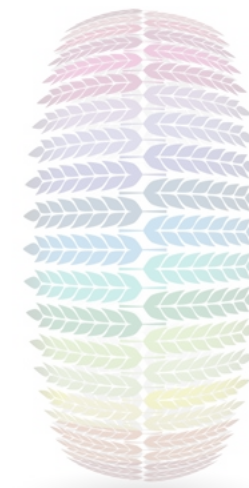
3 Written Exam – set and marked by Pearson

Unit 2: Plant and Soil Science

Mandatory unit for **Foundation Diploma, Diploma and Extended Diploma qualifications**.

A written examination set and marked by Pearson, completed under supervised conditions. The supervised assessment period is a maximum of 1 hour and 30 minutes in a single session in a period timetabled by Pearson.

Frequency: Twice yearly
First assessment window: May/June 2018



Your new BTEC Nationals in Animal Management

Your new BTEC Nationals in Animal Management offer Tech Level qualifications that can be studied alongside other level 3 qualifications such as A levels or other BTEC Nationals as part of a larger programme of study, or as the main focus of study. All sizes attract UCAS points and are widely recognised by universities and employers.

They provide:

- **flexibility** for your students to progress to larger-size qualifications
- opportunities for students to showcase their skills through **practical assessments**
- the **underpinning knowledge and skills** needed to meet industry requirements
- the **transferable and high-order skills** so highly regarded by HE and employers
- **Tech Level qualifications** with clear purpose and progression to higher education or employment.

Tech Level qualifications

Tech Level qualifications are for students wishing to progress directly to employment or apprenticeships through specialist study, or choose to go on to higher level study.

Students will have the opportunity to:

- **choose between different qualification sizes** so they have the option to study full or part-time or take a BTEC alongside other level 3 qualifications such as A levels
- equip themselves with **specialist knowledge and skills** for their chosen career path
- **develop transferable knowledge and skills.**



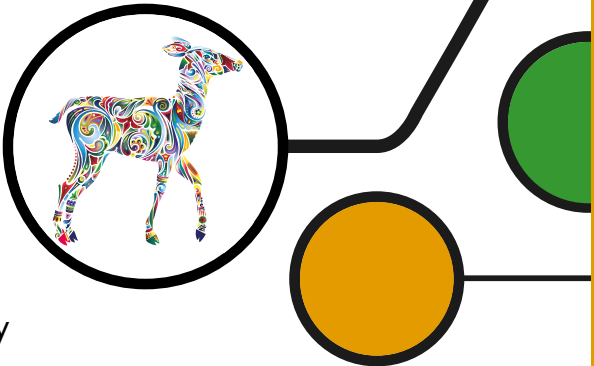
HE and Employer support

See the list of organisations who've written letters of support for your new BTEC Nationals in Animal Management at: quals.pearson.com/BTECNatsAMlettersGuide



Choice of course sizes

Here's an overview of the Tech Level-style qualifications for Animal Management. You'll see we've listened to feedback from employers and HE, so there are more mandatory units to ensure all learners master the same foundation of essential knowledge and skills. And, there's still the traditional range of optional units to complete the course. These Tech Level qualifications offer your learners the chance to prepare for a career in animal management by gaining hands-on experience during their course. Choose the size that's right for you – and then explore your units in more details on page 14.



Extended Certificate (360 GLH)	Foundation Diploma (540 GLH)	Diploma (720 GLH)	Extended Diploma (1080 GLH)
Equivalent in size to 1 A level Tech Level TOTAL: 5 UNITS	Equivalent in size to 1.5 A levels Tech Level TOTAL: 7 UNITS	Equivalent in size to 2 A levels Tech Level TOTAL: 10 UNITS	Equivalent in size to 3 A levels Tech Level TOTAL: 15 UNITS
5 MANDATORY UNITS	6 MANDATORY UNITS	7 MANDATORY UNITS	11 MANDATORY UNITS
0 OPTIONAL UNITS	1 OPTIONAL UNIT	3 OPTIONAL UNITS	4 OPTIONAL UNITS
A broad study of the animal management sector.	Covers the fundamentals of the animal management sector.	Designed to be the substantive part of a 16-19 study programme for the animal management sector.	Two-year full time course specialising in animal management including a strong element of science.
Supports progression to:	Supports progression to:	Supports progression to:	Supports progression to:
<ul style="list-style-type: none">• Further or higher education – when studied alongside other level 3 qualifications• Apprenticeship/employment in animal management sector	<ul style="list-style-type: none">• Higher education – when studied alongside other level 3 qualifications• Apprenticeship/employment in animal management sector	<ul style="list-style-type: none">• Higher education – when studied alongside other level 3 qualifications• Direct employment in roles such as animal management assistant or supervisor.	<ul style="list-style-type: none">• Higher education• Direct employment in Agriculture sector in roles such as stock/herdsperson, dairyman, livestock/crop contractor, agricultural technician, tractor driver, farm mechanic and unit manager.

Scheduled first teaching: **September 2016***

Scheduled first teaching: **September 2016***

Scheduled first teaching: **September 2016***

Scheduled first teaching: **September 2016***

*Included on the DfE's 16-19 performance measures in England.

Your choice of course sizes in detail - Mandatory units

Mandatory Unit titles	Assessment type	GLH	Extended Certificate (360 GLH)	Foundation Diploma (540 GLH)	Diploma (720 GLH)	Extended Diploma (1080 GLH)
			Tech Level	Tech Level	Tech Level	Tech Level
1. Animal Breeding and Genetics	Written exam	120				M*
2. Animal Biology	Task	120		M*	M*	M*
3. Animal Welfare and Ethics	Task	120	MS*	MS*	MS*	MS*
4. Practical Animal Husbandry	Assignment	60	M*	M*	M*	M*
5. Animal Behaviour	Assignment	60	M	M	M	M
6. Animal Health and Diseases	Assignment	60	M	M	M	M
7. Work Experience in the Animal Sector	Assignment	60	M	M	M	M
8. Investigative Research Project	Assignment	60			M	M
9. Practical Skills in Animal Science	Assignment	60				M
10. Animal Metabolism	Assignment	60				M*
11. Advanced Animal Nutrition	Assignment	60				M

Assignment – Set and marked internally

Task – Set and marked by Pearson

Written exam – Set and marked by Pearson

M – Mandatory unit
MS – Synoptic unit
* – Students must pass this unit (see page 42 for more details)

Your choice of course sizes in detail – Optional Units

Optional Unit titles	Assessment type	GLH	Extended Certificate (360 GLH)	Foundation Diploma (510 GLH)	Diploma (720 GLH)	Extended Diploma (1080 GLH)
			Tech Level	Tech Level	Tech Level	Tech Level
			n/a	Choose 1	Choose 3	Choose 4
12. Business Management in the Animal Sector	Assignment	60		O	O	O
13. Animal Management in a Retail Environment	Assignment	60		O	O	O
14. Animals in Boarding Establishments	Assignment	60		O	O	O
15. Developing an Enterprise in the Animal Sector	Assignment	60		O	O	O
16. Animal Grooming	Assignment	60		O	O	O
17. Principles of Animal Nursing	Assignment	60		O	O	O
18. Aquatic Animal Health and Husbandry	Assignment	60		O	O	O
19. Farm Livestock Husbandry	Assignment	60		O	O	O
20. Human and Animal Interaction	Assignment	60		O	O	O
21. Exotic Animal Husbandry	Assignment	60		O	O	O
22. Practical Estate Planning, Construction and Maintenance	Assignment	60		O	O	O
23. Zoological Animal Health & Husbandry	Assignment	60		O	O	O
24. Wildlife Ecology and Conservation Management	Assignment	60		O	O	O

Assignment – Set and marked internally

O – Optional Unit

See next page for information on assessment



Practical assessment

Your BTEC Nationals in Animal Management students will apply their learning through practical assessments in the form of internally assessed **assignments** and externally assessed **tasks** and **written exams**.

Your detailed unit charts on pages 14 and 15 show how each unit is assessed as well as the expected guided learning hours.

Here's a brief guide to your BTEC Nationals in Animal Management assessment:

1 Assignments – internally assessed by you

The same BTEC tried-and-tested teaching and assessment style teachers and students know and love.

For internally assessed assignments, you and your programme team draw up an assessment plan and create an assignment brief, for your students to then carry out set tasks and create evidence around work-related scenarios.

Assignments can include research, projects, investigations, fieldwork and experiments and often link theory with practical exercises.

How we help you:

- We provide **authorised assignment briefs** – once you've verified these are suitable for your learners they are ready to use.
- You can download our **guide to writing assignments** if you prefer to create your own.
- We've an **assessment plan template** you can download to save you time.

Browse our step-by-step guide to delivering BTEC at quals.pearson.com/BTECstepbystepGuide and find out about all the support available on page 47 of this guide.

Learn more about assessment and grading

You'll find detailed unit and assessment information in your Specification at quals.pearson.com/BTECNatsAM16Guide

Download your exam timetable at quals.pearson.com/BTECexamsGuide



2 Tasks

Unit 1: Animal Breeding and Genetics

Mandatory unit for **Extended Diploma qualifications**.

A supervised assessment task completed within a single two-hour session. Learners will be given information relating to animal breeding to research two weeks prior to the supervised assessment period.

Frequency: Twice yearly
First assessment window: May/June 2018

Unit 3: Animal Welfare and Ethics

Mandatory unit for **all qualifications**.

A supervised assessment task completed within three hours. Learners will be given with a scenario relating to animal welfare issues to research two weeks prior to the supervised assessment period.

Frequency: Twice yearly
First assessment window: May/June 2017

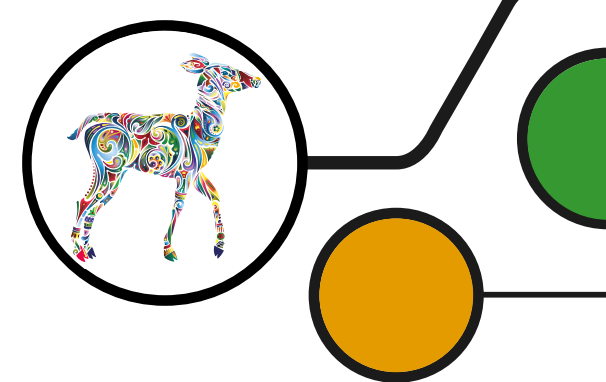
3 Written Exams

Unit 2: Animal Biology

Mandatory unit for **Foundation Diploma, Diploma and Extended Diploma qualifications**.

A 1.5 hour written exam including a mix of short-answer questions and extended-writing opportunities to assess understanding of animal anatomy and physiology.

Frequency: Twice yearly
First assessment window: May/June 2018



Your new BTEC Nationals in Countryside Management

Your new BTEC Nationals in Countryside Management offer Tech Level qualifications that can be studied alongside other level 3 qualifications such as A levels or other BTEC Nationals as part of a larger programme of study, or as the main focus of study. All sizes attract UCAS points and are widely recognised by universities and employers.

They provide:

- **flexibility** for your students to progress to larger-size qualifications
- opportunities for students to showcase their skills through **practical assessments**
- the **underpinning knowledge and skills** needed to meet industry requirements
- the **transferable and high-order skills** so highly regarded by HE and employers
- **Tech Level qualifications** with clear purpose and progression to higher education or employment.

Tech Level qualifications

Tech Level qualifications are for students wishing to progress directly to employment or apprenticeships through specialist study, or choose to go on to higher level study.

Students will have the opportunity to:

- **choose between different qualification sizes** so they have the option to study full or part-time or take a BTEC alongside other level 3 qualifications such as A levels
- equip themselves with **specialist knowledge and skills** for their chosen career path
- **develop transferable knowledge and skills.**

HE and Employer support

See the list of organisations who've written letters of support for your new BTEC Nationals in Countryside Management at: quals.pearson.com/BTECNatsCMlettersGuide



Choice of course sizes

Here's an overview of the Tech Level-style qualifications for Countryside Management. You'll see we've listened to feedback from employers and HE, so there are more mandatory units to ensure all learners master the same foundation of essential knowledge and skills. And, there's still the traditional range of optional units to complete the course. These Tech Level qualifications offer your learners the chance to prepare for a career in Countryside Management by gaining hands-on experience during their course. Choose the size that's right for you – and then explore your units in more details on page 20.

Extended Certificate (360 GLH)	Foundation Diploma (540 GLH)	Diploma (720 GLH)	Extended Diploma (1080 GLH)
Equivalent in size to 1 A level Tech Level TOTAL: 5 UNITS	Equivalent in size to 1.5 A levels Tech Level TOTAL: 6 UNITS	Equivalent in size to 2 A levels Tech Level TOTAL: 9 UNITS	Equivalent in size to 3 A levels Tech Level TOTAL: 14 UNITS
4 MANDATORY UNITS	5 MANDATORY UNITS	7 MANDATORY UNITS	10 MANDATORY UNITS
1 OPTIONAL UNIT	1 OPTIONAL UNIT	2 OPTIONAL UNITS	4 OPTIONAL UNITS
A broad study of the countryside management sector.	Covers the fundamentals of the countryside management sector.	In-depth study of the sector.	Two-year full time course.
Supports progression to:	Supports progression to:	Supports progression to:	Supports progression to:
<ul style="list-style-type: none">• Further or higher education – when studied alongside other level 3 qualifications• Apprenticeship/employment in roles such as trainee estates operative and trainee reserve warden.	<ul style="list-style-type: none">• Higher education – when studied alongside other level 3 qualifications• Apprenticeship/employment in roles such as estates operative, fieldwork assistant and reserve warden.	<ul style="list-style-type: none">• Higher education – when studied alongside other level 3 qualifications• Direct employment in roles such as assistant warden/ranger/estate supervisor, senior reserve warden, bird rearer and assistant gamekeeper.	<ul style="list-style-type: none">• Higher education• Direct employment in countryside management sector in roles such as ranger, warden, estate supervisor, shoot manager, science officer, researcher and education officer.

Scheduled first teaching: **September 2017****

Scheduled first teaching: **September 2017****

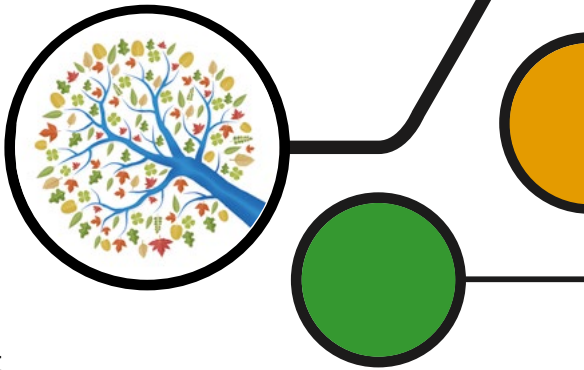
Scheduled first teaching: **September 2017****

Scheduled first teaching: **September 2017****

The **Diploma (720 GLH)** and **Extended Diploma (1080 GLH)** qualifications are currently in development. The information here is not final but will give you a guide to the format of these two qualifications.

Please check website for latest information quals.pearson.com/BTECNatsCF16Guide or sign up for updates at quals.pearson.com/BTECNats16updateGuide and we'll let you know when final content is available.

**To be submitted for DfE performance measures.



Your choice of course sizes in detail - Mandatory units

Mandatory Unit titles	Assessment type	GLH	Extended Certificate (360 GLH)	Foundation Diploma (540 GLH)	Diploma (720 GLH)	Extended Diploma (1080 GLH)
			Tech Level	Tech Level	Tech Level	Tech Level
1. Professional Working Responsibilities	Task	120	M*	M*	M*	M*
2. Plant and Soil Science	Written exam	120		M*	M*	M*
3. Countryside Recreation and Business	Task	120			MS*	MS*
4. Work Experience in Land-based Sectors	Assignment	60	M	M	M	M
5. Estate Skills	Assignment	60	MS*	M*	M*	M*
6. Managing Environmental Habitats	Assignment	60		MS*	MS*	M
7. Woodland Management	Assignment	60				M
10. Land-based Machinery Operations	Assignment	60				M
11. Wildlife Ecology	Assignment	60			M	M

Assignment – Set and marked internally
Task – Set and marked by Pearson
Written exam – Set and marked by Pearson

- M – Mandatory unit
- MS – Synoptic unit
- * – Students must pass this unit (see page 42 for more details)

The Diploma (720 GLH) and Extended Diploma (1080 GLH) qualifications are currently in development. These are not the final units but will give you an idea of what we are planning to include.

Please check website for latest information quals.pearson.com/BTECNatsAgriculture16Guide or sign up for updates at quals.pearson.com/BTECNats16updateGuide and we'll let you know when the final specifications are available.

Your choice of course sizes in detail – Optional Units

Optional Unit titles	Assessment type	GLH	Extended Certificate (360 GLH)	Foundation Diploma (510 GLH)	Diploma (720 GLH)	Extended Diploma (1080 GLH)
			Tech Level	Tech Level	Tech Level	Tech Level
			Choose 1	Choose 1	Choose 2	Choose 4
7. Woodland Management		60	O	O	O	
8. Identification, Planting and Care of Trees	Assignment	60	O	O	O	O
9. Developing a Land-based Enterprise	Assignment	60	O	O	O	
10. Land-based Machinery Operations	Assignment	60		O		
11. Wildlife Ecology	Assignment	60	O	O		
12. Controlling Countryside Pests and Predators	Assignment	60		O	O	O
13. Gamekeeping	Assignment	60		O	O	O
14. Managing a Shoot	Assignment	60			O	O
15. Safe Handling of Firearms	Assignment	60			O	O
16. Water Quality Management	Assignment	60			O	O
17. Deer husbandry and Care	Assignment	60			O	O
18. Tree Felling and Chainsaw Safety	Assignment	60			O	O
19. Freshwater and Wetland Management	Assignment	60			O	O
20. Coastal Management	Assignment	60			O	O
21. Working Dogs in the Land-based Sector	Assignment	60			O	O

Assignment – Set and marked internally
O – Optional Unit

See next page for information on assessment

Practical assessment

Your BTEC Nationals in Countryside Management students will apply their learning through practical assessments in the form of internally assessed **assignments** and externally assessed **tasks** and **written exams**.

Your unit charts on pages 20 and 21 show how each unit may be assessed as well as the expected guided learning hours.

Here's a brief guide to your BTEC Nationals in Countryside Management assessment:

1 Assignments – internally assessed by you

The same BTEC tried-and-tested teaching and assessment style teachers and students know and love.

For internally assessed assignments, you and your programme team draw up an assessment plan and create an assignment brief for your students to then carry out set tasks and create evidence around work-related scenarios.

Assignments can include research, projects, investigations, fieldwork and experiments and often link theory with practical exercises.

How we help you:

- We provide **authorised assignment briefs** – once you've verified these are suitable for your learners they are ready to use.
- You can download our **guide to writing assignments** if you prefer to create your own.
- We've an **assessment plan template** you can download to save you time.

Browse our step-by-step guide to delivering BTEC at quals.pearson.com/BTECstepbystepGuide and find out about all the support available on page 47 of this guide.

Learn more about assessment and grading

You'll find detailed unit and assessment information in your Specification at quals.pearson.com/BTECNatsCF16Guide

Download your exam timetable at quals.pearson.com/BTECexamsGuide



2

Tasks – set and marked by Pearson

Unit 1: Professional Working Responsibilities

Mandatory unit for **all qualifications**.

A task set and marked by Pearson completed under supervised conditions following pre-released information enabling individual research up to 6 hours. The supervised assessment period is a maximum of 2 hours and can be arranged over 2 sessions in a period timetabled by Pearson. Written submission evidence.

Frequency: Twice yearly
First assessment window: May/June 2018

Unit 3: Countryside Management project

Mandatory unit for **Extended Diploma qualifications**.

A supervised assessment task - final content to be confirmed.

Frequency: Twice yearly
First assessment window: May/June 2017

3

Written Exam – set and marked by Pearson

Unit 2: Plant and Soil Science

Mandatory unit for **Foundation Diploma, Diploma and Extended Diploma qualifications**.

A written examination set and marked by Pearson, completed under supervised conditions. The supervised assessment period is a maximum of 1 hour and 30 minutes in a single session in a period timetabled by Pearson.

Frequency: Twice yearly
First assessment window: May/June 2018



Your new BTEC Nationals in Equine Management

Your new BTEC Nationals in Equine Management offer Tech Level qualifications that can be studied alongside other level 3 qualifications such as A levels or other BTEC Nationals as part of a larger programme of study, or as the main focus of study. All sizes attract UCAS points and are widely recognised by universities and employers.

They provide:

- **flexibility** for your students to progress to larger-size qualifications
- opportunities for students to showcase their skills through **practical assessments**
- the **underpinning knowledge and skills** needed to meet industry requirements
- the **transferable and high-order skills** so highly regarded by HE and employers
- **Tech Level qualifications** with clear purpose and progression to higher education or employment.

Tech Level qualifications

Tech Level qualifications are for students wishing to progress directly to employment or apprenticeships through specialist study, or choose to go on to higher level study.

Students will have the opportunity to:

- **choose between different qualification sizes** so they have the option to study full or part-time or take a BTEC alongside other level 3 qualifications such as A levels
- equip themselves with **specialist knowledge and skills** for their chosen career path
- **develop transferable knowledge and skills.**



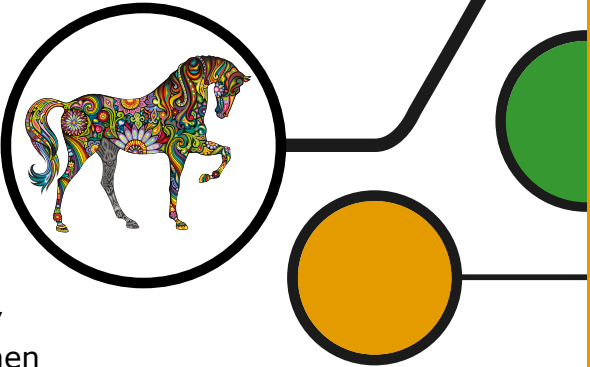
HE and Employer support

See the list of organisations who've written letters of support for your new BTEC Nationals in Equine Management at: quals.pearson.com/BTECNatsEMlettersGuide



Choice of course sizes

Here's an overview of the Tech Level-style qualifications for Equine Management. You'll see we've listened to feedback from employers and HE, so there are more mandatory units to ensure all learners master the same foundation of essential knowledge and skills. And, there's still the traditional range of optional units to complete the course. These Tech Level qualifications offer your learners the chance to prepare for a career in Equine Management by gaining hands-on experience during their course. Choose the size that's right for you – and then explore your units in more details on page 26.



Extended Certificate (360 GLH)	Foundation Diploma (540 GLH)	Diploma in Yard Management (720 GLH)	Diploma in Equitation (720 GLH)	Extended Diploma (1080 GLH)
Equivalent in size to 1 A level Tech Level TOTAL: 5 UNITS	Equivalent in size to 1.5 A levels Tech Level TOTAL: 7 UNITS	Equivalent in size to 2 A levels Tech Level TOTAL: 10 UNITS	Equivalent in size to 2 A levels Tech Level TOTAL: 10 UNITS	Equivalent in size to 3 A levels Tech Level TOTAL: 15 UNITS
4 MANDATORY UNITS	6 MANDATORY UNITS	8 MANDATORY UNITS	8 MANDATORY UNITS	9 MANDATORY UNITS
1 OPTIONAL UNIT	1 OPTIONAL UNIT	2 OPTIONAL UNITS	2 OPTIONAL UNITS	6 OPTIONAL UNITS
A broad study of the equine management sector.	Covers the fundamentals of the equine management sector.	In-depth study of the sector with specialist focus on yard management pathway.	In-depth study of the sector with specialist focus on equitation pathway.	Two-year full time course specialising in equine management.
Supports progression to:	Supports progression to:	Supports progression to:	Supports progression to:	Supports progression to:
<ul style="list-style-type: none">• Further or higher education – when studied alongside other level 3 qualifications• Apprenticeship in equine sector• Direct employment in roles such as trainee groom or stable yard worker.	<ul style="list-style-type: none">• Higher education – when studied alongside other level 3 qualifications• Apprenticeship in equine sector• Direct employment in roles such as assistant groom or yard assistant.	<ul style="list-style-type: none">• Higher education – when studied alongside other level 3 qualifications• Apprenticeship in equine sector• Direct employment in roles such as yard or event supervisor.	<ul style="list-style-type: none">• Higher education – when studied alongside other level 3 qualifications• Apprenticeship in equine sector• Direct employment in roles such as trainee riding instructor or ride leader.	<ul style="list-style-type: none">• Higher education• Ultimately employment in equine management sector in a range of non-riding roles.
<i>Scheduled first teaching:</i> September 2017**	<i>Scheduled first teaching:</i> September 2017**	<i>Scheduled first teaching:</i> September 2017**	<i>Scheduled first teaching:</i> September 2017**	<i>Scheduled first teaching:</i> September 2017**

**Submitted for DfE performance measures.

Your choice of course sizes in detail - Mandatory units

Mandatory Unit titles	Assessment type	GLH	Extended Certificate (360 GLH)	Foundation Diploma (540 GLH)	Diploma Yard Management (720 GLH)	Diploma Equitation (720 GLH)	Extended Diploma (1080 GLH)
			Tech Level	Tech Level	Tech Level	Tech Level	Tech Level
1. Equine Structure, Form and Function	Written exam	120	M*	M*	M*	M*	M*
2. Equine Diet and Nutrition	Task	120		M*	M*	M*	M*
3. Managing Equine Disease	Task	120					MS*
4. Work Experience in the Equine Sector	Assignment	60	M	M	M	M	M
5. Horse Tack, Equipment and Rugs	Assignment	60	M*	M*	M*	M*	M*
6. Equine Health and Husbandry	Assignment	60	MS*	MS*	M*	M*	M*
7. Preparation and Presentation for Competition Disciplines	Assignment	60					M
9. Managing an Equine Yard	Assignment	60			MS*		M
10. Equine Business Management	Assignment	60			MS*		
11. Horse Fitness	Assignment	60				MS*	
12. Schooling Horses on the Flat	Assignment	60					
13. Managing an Equine Event	Assignment	60			MS*		

- Assignment – Set and marked internally
- Task – Set and marked by Pearson
- Written exam – Set and marked by Pearson
- O – Optional Unit

M – Mandatory unit
MS – Synoptic unit
* – Students must pass this unit
(see page 42 for more details)

Your choice of course sizes in detail – Optional Units

Optional Unit titles	Assessment type	GLH	Extended Certificate (360 GLH)	Foundation Diploma (540 GLH)	Diploma Yard Management (720 GLH)	Diploma Equitation (720 GLH)	Extended Diploma (1080 GLH)
			Tech Level	Tech Level	Tech Level	Tech Level	Tech Level
			Choose 1	Choose 1	Choose 2	Choose 2	Choose 6
7. Preparation and Presentation for Competition Disciplines	Assignment	60	O		O		
8. Equine Behaviour	Assignment	60	O	O	O	O	
10. Equine Business Management	Assignment	60		O			O
11. Horse Fitness	Assignment	60					O
12. Schooling Horses on the Flat	Assignment	60					O
13. Managing an Equine Event	Assignment	60					O
14. Theory of Training Horses	Assignment	60				O	O
15. Riding Horses in the Open	Assignment	60	O	O	O	O	O
16. Ground Poles and Grid work for Horses	Assignment	60				O	O
17. Showjumping and Cross-country Courses	Assignment	60				O	O
18. Estates and Grassland Management	Assignment	60	O	O	O	O	O
19. Working Horses from the Ground	Assignment	60			O	O	O
20. Introduction to Equestrian Coaching	Assignment	60	O	O	O	O	O
21. Equine Stud Management	Assignment	60			O		O
22. Managing Equine Injuries and Rehabilitation	Assignment	60			O	O	O
23. Investigative Research Project	Assignment	60					O
24. Practical Skills in Animal Science	Assignment	60					O
25. Animal Metabolism	Assignment	60					O
26. Equine Function at the Cellular Level	Assignment	60					O

See next page for information on assessment

Practical assessment

Your BTEC Nationals in Equine Management students will apply their learning through practical assessments in the form of internally assessed **assignments** and externally assessed **tasks** and **written exams**.

Your detailed unit charts on pages 26 and 27 show how each unit is assessed as well as the expected guided learning hours.

Here's a brief guide to your BTEC Nationals in Equine Management assessment:

1 Assignments – internally assessed by you

The same BTEC tried-and-tested teaching and assessment style teachers and students know and love.

For internally assessed assignments, you and your programme team draw up an assessment plan and create an assignment brief, for your students to then carry out set tasks and create evidence around work-related scenarios.

Assignments can include research, projects, investigations, fieldwork and experiments and often link theory with practical exercises.

How we help you:

- We provide **authorised assignment briefs** – once you've verified these are suitable for your learners they are ready to use.
- You can download our **guide to writing assignments** if you prefer to create your own.
- We've an **assessment plan template** you can download to save you time.

Browse our step-by-step guide to delivering BTEC at quals.pearson.com/BTECstepbystepGuide and find out about all the support available on page 47 of this guide.

Learn more about assessment and grading

You'll find detailed unit and assessment information in your Specification at quals.pearson.com/BTECNatsEM16Guide

Download your exam timetable at quals.pearson.com/BTECexamsGuide



2 Tasks

Unit 2: Equine Diet and Nutrition
Mandatory unit for **Foundation Diploma, Diploma** and **Extended Diploma qualifications**.

A supervised assessment task completed within three hours. Learners will be given information relating to an equine diet and nutrition scenario to research two weeks prior to the supervised assessment period.

Frequency: Twice yearly
First assessment window: May/June 2018

Unit 3: Managing Equine Disease
Mandatory unit for **Extended Diploma qualifications**.

A supervised assessment task completed within three hours. Learners will be given information relating to managing equine diseases to research two weeks prior to the supervised assessment period.

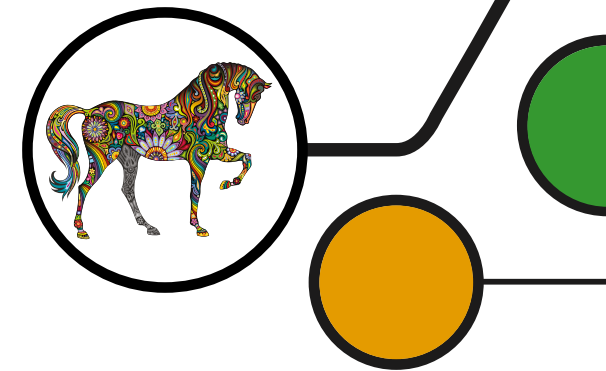
Frequency: Twice yearly
First assessment window: May/June 2019

3 Written Exams

Unit 1: Equine Structure, Form and function
Mandatory unit for **all qualifications**.

A 1.5 hour written exam including a mix of short-answer and extended-writing questions to assess understanding of equine anatomy, physiology and genetics.

Frequency: Twice yearly
First assessment window: May/June 2018



Your new BTEC Nationals in Forestry and Arboriculture

Your new BTEC Nationals in Forestry and Arboriculture offer Tech Level qualifications that can be studied alongside other level 3 qualifications such as A levels or other BTEC Nationals as part of a larger programme of study, or as the main focus of study. All sizes attract UCAS points and are widely recognised by universities and employers.

They provide:

- **flexibility** for your students to progress to larger-size qualifications
- opportunities for students to showcase their skills through **practical assessments**
- the **underpinning knowledge and skills** needed to meet industry requirements
- the **transferable and high-order skills** so highly regarded by HE and employers
- **Tech Level qualifications** with clear purpose and progression to higher education or employment.

Tech Level qualifications

Tech Level qualifications are for students wishing to progress directly to employment or apprenticeships through specialist study, or choose to go on to higher level study.

Students will have the opportunity to:

- **choose between different qualification sizes** so they have the option to study full or part-time or take a BTEC alongside other level 3 qualifications such as A levels
- equip themselves with **specialist knowledge and skills** for their chosen career path
- **develop transferable knowledge and skills.**



Choice of course sizes

Here's an overview of the Tech Level-style qualifications for Forestry and Arboriculture. You'll see we've listened to feedback from employers and HE, so there are more mandatory units to ensure all learners master the same foundation of essential knowledge and skills. And, there's still the traditional range of optional units to complete the course. These Tech Level qualifications offer your learners the chance to prepare for a career in Forestry and Arboriculture by gaining hands-on experience during their course. Choose the size that's right for you – and then explore your units in more details on page 32.



Foundation Diploma (540 GLH)	Diploma (720 GLH)	Extended Diploma (1080 GLH)
Equivalent in size to 1.5 A levels Tech Level TOTAL: 8 UNITS	Equivalent in size to 2 A levels Tech Level TOTAL: 11 UNITS	Equivalent in size to 3 A levels Tech Level TOTAL: 16 UNITS
6 MANDATORY UNITS	15 MANDATORY UNITS	15 MANDATORY UNITS
Covers the fundamentals of the Forestry and Arboriculture sector.	In-depth study of the sector.	Two-year full time course.
Supports progression to:	Supports progression to:	Supports progression to:
<ul style="list-style-type: none"> • Higher education – when studied alongside other level 3 qualifications • Apprenticeship/employment in roles such as ?? 	<ul style="list-style-type: none"> • Higher education – when studied alongside other level 3 qualifications • Direct employment in roles such as ?? 	<ul style="list-style-type: none"> • Higher education • Direct employment in Forestry and Arboriculture sector in roles such as ??

Scheduled first teaching:
September 2017**

Scheduled first teaching:
September 2017**

Scheduled first teaching:
September 2017**

The **BTEC Nationals in Forestry and Arboriculture** qualifications are currently in development. The information here is not final but will give you a guide to the format of these two qualifications.

Please check website for latest information **quals.pearson.com/BTECNatsForestry16Guide** or sign up for updates at **quals.pearson.com/BTECNats16updateGuide** and we'll let you know when final content is available.

**To be submitted for DfE performance measures.

Your choice of course sizes in detail - Mandatory units

Mandatory Unit titles	Assessment type	GLH	Foundation Diploma (540 GLH)	Extended Diploma Arboriculture (1080 GLH)	Extended Diploma Forestry (1080 GLH)
			Tech Level	Tech Level	Tech Level
1. Professional Working Responsibilities	Task	120	M*	M*	M*
2. Plant and Soil Science	Written exam	120	M*	M*	M*
3. Project	Task	120		MS*	MS*
4. Work Experience in Land-based Sectors	Assignment	60	M	M	M
5. Identification, Planting and Care of Trees	Assignment	60	M*	M*	M*
6. Tree and Shrub Pruning	Assignment	60	M	M	M
7. Signs of Pests and Disease	Assignment	60	M	M	M
8. Tree Felling and Chainsaw Safety	Assignment	60	M	M	M
9. Estate Skills	Assignment	60	M	M	M

Assignment – Set and marked internally
Task – Set and marked by Pearson
Written exam – Set and marked by Pearson

M – Mandatory unit
MS – Synoptic unit
* – Students must pass this unit (see page 42 for more details)

The **BTEC Nationals in Forestry and Arboriculture** qualifications are currently in development. These are not the final units but will give you a guide to what we plan to include.

Please check website for latest information **quals.pearson.com/BTECNatsForestry16Guide** or sign up for updates at **quals.pearson.com/BTECNats16updateGuide** and we'll let you know when final content is available.

Mandatory Unit titles (continued)	Assessment type	GLH	Foundation Diploma (540 GLH)	Extended Diploma Arboriculture (1080 GLH)	Extended Diploma Forestry (1080 GLH)
			Tech Level	Tech Level	Tech Level
10. Understanding roles and responsibilities in contract supervision	Assignment	60		M	M
11. Specialist Arboriculture Machinery Equipment for Timber Conservation and Utilisation	Assignment	60		M	
12. Aerial Arboriculture Skills	Assignment	60		M	
13. Surveys and Inspections	Assignment	60		M	
14. Urban Forestry and Arboriculture Projects	Assignment	60		M	
15. Trees in Urban Landscape – NEW	Assignment	60		M	
16. Specialist Forestry Machinery Equipment for Timber Conservation and Utilisation	Assignment	60			M
17. Woodland Management Silviculture	Assignment	60			M
18. Forest and Woodland Skills	Assignment	60			M
19. Measure Trees and Carry Out Sampling	Assignment	60			M
20. Forest Recreation	Assignment	60			M



Practical assessment

Your BTEC Nationals in Forestry and Arboriculture students will apply their learning through practical assessments in the form of internally assessed **assignments** and externally assessed **tasks** and **written exams**.

Your unit charts on pages 32 and 33 show how each unit may be assessed as well as the expected guided learning hours.

Here's a brief guide to your BTEC Nationals in Forestry and Arboriculture assessment:

1 Assignments – internally assessed by you

The same BTEC tried-and-tested teaching and assessment style teachers and students know and love.

For internally assessed assignments, you and your programme team draw up an assessment plan and create an assignment brief for your students to then carry out set tasks and create evidence around work-related scenarios.

Assignments can include research, projects, investigations, fieldwork and experiments and often link theory with practical exercises.

How we help you:

- We provide **authorised assignment briefs** – once you've verified these are suitable for your learners they are ready to use.
- You can download our **guide to writing assignments** if you prefer to create your own.
- We've an **assessment plan template** you can download to save you time.

Browse our step-by-step guide to delivering BTEC at quals.pearson.com/BTECstepbystepGuide and find out about all the support available on page 47 of this guide.

Learn more about assessment and grading

You'll find detailed unit and assessment information in your Specification at quals.pearson.com/BTECNatsForestry16Guide

Download your exam timetable at quals.pearson.com/BTECexamsGuide

2 Tasks – set and marked by Pearson

Unit 1: Professional Working Responsibilities

Mandatory unit for **all qualifications**.

A task set and marked by Pearson completed under supervised conditions following pre-released information enabling individual research up to 6 hours. The supervised assessment period is a maximum of 2 hours and can be arranged over 2 sessions in a period timetabled by Pearson. Written submission evidence.

Frequency: Twice yearly
First assessment window: May/June 2018

Unit 3: Forestry and Arboriculture project

Mandatory unit for **Extended Diploma qualifications**.

A supervised assessment task – final content to be confirmed.

Frequency: Twice yearly
First assessment window: May/June 2017

3 Written Exam – set and marked by Pearson

Unit 2: Plant and Soil Science

Mandatory unit for **all qualifications**.

A written examination set and marked by Pearson, completed under supervised conditions. The supervised assessment period is a maximum of 1 hour and 30 minutes in a single session in a period timetabled by Pearson.

Frequency: Twice yearly
First assessment window: May/June 2018



Your new BTEC Nationals in Horticulture

Your new BTEC Nationals in Horticulture offer Tech Level qualifications that can be studied alongside other level 3 qualifications such as A levels or other BTEC Nationals as part of a larger programme of study, or as the main focus of study. All sizes attract UCAS points and are widely recognised by universities and employers.

They provide:

- **flexibility** for your students to progress to larger-size qualifications
- opportunities for students to showcase their skills through **practical assessments**
- the **underpinning knowledge and skills** needed to meet industry requirements
- the **transferable and high-order skills** so highly regarded by HE and employers
- **Tech Level qualifications** with clear purpose and progression to higher education or employment.

Tech Level qualifications

Tech Level qualifications are for students wishing to progress directly to employment or apprenticeships through specialist study, or choose to go on to higher level study.

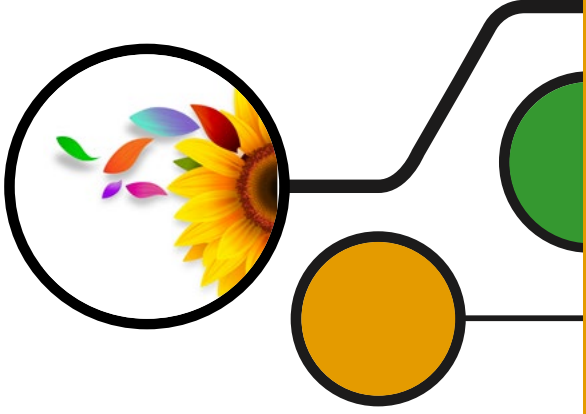
Students will have the opportunity to:

- **choose between different qualification sizes** so they have the option to study full or part-time or take a BTEC alongside other level 3 qualifications such as A levels
- equip themselves with **specialist knowledge and skills** for their chosen career path
- **develop transferable knowledge and skills.**



Choice of course sizes

Here's an overview of the Tech Level-style qualifications for Horticulture. You'll see we've listened to feedback from employers and HE, so there are more mandatory units to ensure all learners master the same foundation of essential knowledge and skills. And, there's still the traditional range of optional units to complete the course. These Tech Level qualifications offer your learners the chance to prepare for a career in Horticulture by gaining hands-on experience during their course. Choose the size that's right for you – and then explore your units in more details on page 36.



Extended Certificate (360 GLH)	Foundation Diploma (540 GLH)	Diploma (720 GLH)	Extended Diploma (1080 GLH)
Equivalent in size to 1 A level Tech Level TOTAL: 5 UNITS	Equivalent in size to 1.5 A levels Tech Level TOTAL: 7 UNITS	Equivalent in size to 2 A levels Tech Level TOTAL: 11 UNITS	Equivalent in size to 3 A levels Tech Level TOTAL: 15 UNITS
4 MANDATORY UNITS	6 MANDATORY UNITS	8 MANDATORY UNITS	10 MANDATORY UNITS
1 OPTIONAL UNIT	1 OPTIONAL UNIT	3 OPTIONAL UNITS	5 OPTIONAL UNITS
A broad study of the Horticulture sector.	Covers the fundamentals of the Horticulture sector.	In-depth study of the sector.	Two-year full time course.
Supports progression to:	Supports progression to:	Supports progression to:	Supports progression to:
<ul style="list-style-type: none">• Further or higher education – when studied alongside other level 3 qualifications• Apprenticeship/employment in roles such as landscaper/ground maintenance operative and trainee groundskeeper.	<ul style="list-style-type: none">• Higher education – when studied alongside other level 3 qualifications• Apprenticeship/employment in roles such as gardener, sales assistant and groundskeeper.	<ul style="list-style-type: none">• Higher education – when studied alongside other level 3 qualifications• Direct employment in roles such as gardener, landscape team leader, charge hand and assistant groundskeeper.	<ul style="list-style-type: none">• Higher education• Direct employment in Horticulture sector in roles such as commercial supervisor, landscape site supervisor, head gardener, grounds/green keeper, nursery assistant manager and plant area supervisor or product sales advisor.

Scheduled first teaching:
September 2017**

Scheduled first teaching:
September 2017**

Scheduled first teaching:
September 2017**

Scheduled first teaching:
September 2017**

The **BTEC Nationals in Horticulture** qualifications are currently in development. The information here is not final but will give you a guide to the format of these two qualifications.

Please check website for latest information
quals.pearson.com/BTECNatsHorticulture16Guide or sign up for updates at **quals.pearson.com/BTECNats16updateGuide** and we'll let you know when final content is available.

**To be submitted for DfE performance measures.

Your choice of course sizes in detail - Mandatory units

Mandatory Unit titles	Assessment type	GLH	Extended Certificate (360 GLH)	Foundation Diploma (540 GLH)	Diploma (720 GLH)	Extended Diploma (1080 GLH)
			Tech Level	Tech Level	Tech Level	Tech Level
1. Professional Working Responsibilities	Task	120		MS*	M*	M*
2. Plant and Soil Science	Written exam	120	M*	M*	M*	M*
3. Horticulture Business Project	Task	120				MS*
4. Work Experience	Assignment	60	M	M	M	M
5. Plant Identification	Assignment	60	M*	M*	M*	M*
6. Plant Husbandry	Assignment	60	MS*	M*	M*	M*
7. Tree, Shrub and Pruning	Assignment	60		M*	M*	M*
8. Landscape and garden design	Assignment	60			MS*	M
9. Plant propagation activities	Assignment	60	M*		MS*	M*
10. Land-based Machinery and Operations	Assignment	60				M

Assignment – Set and marked internally
Task – Set and marked by Pearson
Written exam – Set and marked by Pearson
O – Optional Unit

M – Mandatory unit
MS – Synoptic unit
* – Students must pass this unit (see page 42 for more details)

The **BTEC Nationals in Horticulture** qualifications are currently in development. These are not the final units but will give you a guide to what we plan to include.

Please check website for latest information **quals.pearson.com/BTECNatsHorticulture16Guide** or sign up for updates at **quals.pearson.com/BTECNats16updateGuide** and we'll let you know when final content is available.

Your choice of course sizes in detail – Optional Units

Optional Unit titles	Assessment type	GLH	Extended Certificate (360 GLH)	Foundation Diploma (510 GLH)	Diploma (720 GLH)	Extended Diploma (1080 GLH)
			Tech Level	Tech Level	Tech Level	Tech Level
			Choose 1	Choose 1	Choose 3	Choose 5
7. Tree, Shrub and Pruning	Assignment	60	O			
8. Landscape and garden design	Assignment	60	O	O		
9. Plant propagation activities and cultivation	Assignment	60	O	O		
10. Land-based Machinery and Operations	Assignment	60		O	O	
11. Estate Skills	Assignment	60	O	O	O	O
12. Developing a Land-based Enterprise	Assignment	60		O	O	
13. Zoological Horticulture	Assignment	60			O	O
14. Signs of pests and disease	Assignment	60		O	O	O
15. Turf parks and gardens	Assignment	60		O	O	O
16. Identification, planting and care of trees	Assignment	60		O	O	O
17. Site surveying, levelling and setting out and Horizontal landscape surfaces (patios and steps)	Assignment	60			O	O
18. Sports and amenity turf areas including Winter and summer sport turf	Assignment	60	O	O	O	O
19. Construct and maintain landscape features (timber & decorative) including Construct and restore walls	Assignment	60			O	O
21. Wildlife ecology and conservation	Assignment	60			O	O
22. Production techniques – indoor and outdoor	Assignment	60				O
23. Nursery stock production	Assignment	60				O
24. Prepare garden designs and briefs	Assignment	60				O
25. Aquatic plant biology and husbandary	Assignment	60				O
26. Project management including Contract Management	Assignment	60				O
27. Root-crop and Vegetable Production	Assignment	60				O

Practical assessment

Your BTEC Nationals in Horticulture Management students will apply their learning through practical assessments in the form of internally assessed **assignments** and externally assessed **tasks** and **written exams**.

Your detailed unit charts on pages 38 and 39 show how each unit is assessed as well as the expected guided learning hours.

Here's a brief guide to your BTEC Nationals in Horticulture Management assessment:

1 Assignments – internally assessed by you

The same BTEC tried-and-tested teaching and assessment style teachers and students know and love.

For internally assessed assignments, you and your programme team draw up an assessment plan and create an assignment brief, for your students to then carry out set tasks and create evidence around work-related scenarios.

Assignments can include research, projects, investigations, fieldwork and experiments and often link theory with practical exercises.

How we help you:

- We provide **authorised assignment briefs** – once you've verified these are suitable for your learners they are ready to use.
- You can download our **guide to writing assignments** if you prefer to create your own.
- We've an **assessment plan template** you can download to save you time.

Browse our step-by-step guide to delivering BTEC at quals.pearson.com/BTECstepbystepGuide and find out about all the support available on page 47 of this guide.

Learn more about assessment and grading

You'll find detailed unit and assessment information in your Specification at quals.pearson.com/BTECNatsHorticulture16Guide

Download your exam timetable at quals.pearson.com/BTECexamsGuide



2 Tasks

Unit 1: Professional Working Responsibilities

Mandatory unit for **Foundation Diploma, Diploma** and **Extended Diploma qualifications**.

A task set and marked by Pearson completed under supervised conditions following pre-released information enabling individual research up to 6 hours. The supervised assessment period is a maximum of 2 hours and can be arranged over 2 sessions in a period timetabled by Pearson. Written submission evidence.

Frequency: Twice yearly
First assessment window: May/June 2018

Unit 3: Horticulture project

Mandatory unit for **Extended Diploma qualifications**.

A supervised assessment task – final content to be confirmed.

Frequency: Twice yearly
First assessment window: May/June 2017

3 Written Exams

Unit 2: Plant and Soil Science

Mandatory unit for **all qualifications**.

A written examination set and marked by Pearson, completed under supervised conditions. The supervised assessment period is a maximum of 1 hour and 30 minutes in a single session in a period timetabled by Pearson.

Frequency: Twice yearly
First assessment window: May/June 2018

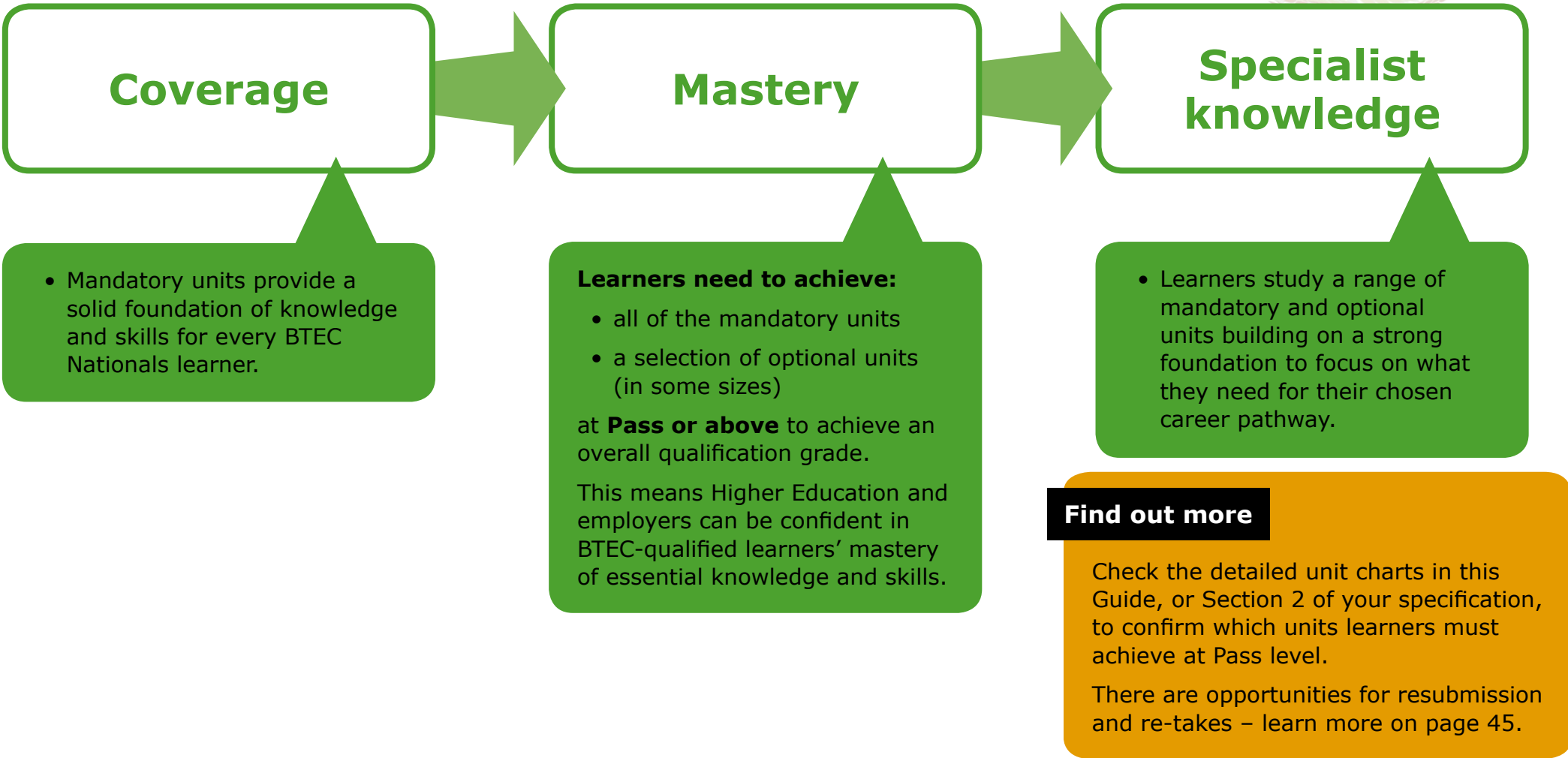


Your units explained

Your new BTEC Nationals retain the familiar flexible, unit-based content, with knowledge and skills applied in project-based assessments.

Coverage and mastery: achieving individual units and the qualification

In response to the needs of employers and Higher Education, we've designed the new courses to provide a consistent foundation of knowledge and skills. This means all BTEC-qualified candidates can start on their chosen career pathway with confidence in their:



Your units explained – Check your spec.

There's plenty more information in your specification – it's worth having a look at the two sections listed below alongside the unit lists in this Guide to give you the full picture.

Check your spec:

Section 2: Structure

Includes a handy summary of:

- **Units included in each size**, so you know what content you'll be teaching
- **Guided Learning Hours**, so you know how long each unit takes to teach
- Which **units the learner has to achieve at pass or above** in order to achieve the full qualification
- **how – and when - each unit is assessed**, and whether the units are mandatory or optional.

Section 3: Understanding your units

- Includes a **simple overview** of what's included in both internally and externally assessed units – essential reading before you dive into the unit content in more detail.

Find out more

Download your specification at quals.pearson.com/BTECNats16and17Guide
See page 46 of this guide for information on Quality Assurance.
See page 47 for details of support available.

See next page for information on Assessment



Assessment

Your new BTEC Nationals use a combination of assessment styles. This gives your learners the opportunity to showcase their skills and apply their knowledge in an appropriate, work-related context, and provides evidence of what they can do when they apply to enter higher education or employment.

Here's a simple summary of each type of assessment – and why not watch our **Quick Guide video** to find out more about the new externally assessed Tasks.

	Assessment	Format	Outcome
Assignments	Set and marked by: Centre (school, college or training provider) Verified by: Pearson	<ul style="list-style-type: none">Practical tasks set in work-related scenarios.Can be tailored to local industry needs.	Learners demonstrate how they apply knowledge and skills to complete a practical project over a period of time, working individually or in groups.
Tasks	Set and marked by: Pearson	<ul style="list-style-type: none">Practical, work-related scenarios taken in realistic, time-based situations.Controlled conditions - some tasks have pre-released information.	Learners demonstrate how they apply learning to common workplace or HE scenarios, providing a consistent standard of assessment for all BTEC learners.
Written Exams	Set and marked by: Pearson	<ul style="list-style-type: none">Learners draw on essential information to create written answers to practical questions in exam conditions.	Learners demonstrate they can apply appropriate knowledge to a work-related challenge in timed conditions.

See the opposite page for information around grading and re-takes



Grading

A learner's final grade reflects their achievements across all units in their BTEC National course.

Both internally and externally assessed units are individually graded as either Pass, Merit or Distinction, and each final unit grade is allocated points.

The total points scored across all units are used to calculate the final qualification grade.

	GLH	Type (Int/Ext)	Grade	Unit points
Unit 1	90	Ext	Distinction	24
Unit 2	90	Int	Distinction	24
Totals	180		D*	48

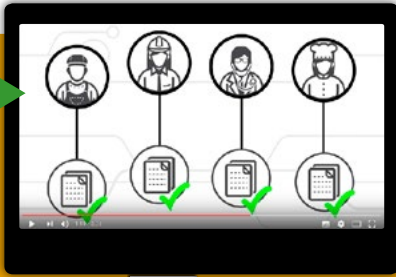
The learner has sufficient points for a D* grade

Check your spec

Section 9 of your specification covers **Understanding the qualification grade**. quals.pearson.com/BTECNationals

Find out more

Watch this short video guide for help and advice around BTEC grading or visit quals.pearson.com/BTECNatsGradingGuide



Re-submissions, re-takes and re-sits



Internal assessments

Re-submissions

If a learner wants to improve their grade on an internal assignment, they may be allowed one re-submission of evidence within **15 days** of receiving the grade for their original submission.

Re-takes

If a learner does not achieve a Pass grade from the initial submission of evidence or from a re-submission, they will be allowed one re-take of a brand new assignment which is set at Pass level only.

External assessments

Re-sits

Students can re-sit externally assessed units once. You can download your exam timetable at quals.pearson.com/BTECexamsGuide

Quality Assurance and Administration

Quality Assurance

Quality assurance is at the heart of our BTEC qualifications and means you have the support you need to ensure the quality and standard of internal assessments in all BTEC centres.

- **New, improved Quality Assurance Handbook**
We've listened to feedback from teachers to understand what you need from your Quality Assurance guidance. As a result, we have taken a new approach to the online Quality Assurance Handbook.
- **Quality Assurance Handbook**
Your online Quality Assurance Handbook is now available as a series of web pages which contain the key information you will need when preparing and delivering BTEC.

You can now:

- **Search information** without having to download several documents.
- **View the information** with a focus on what's most important to you.

If you prefer to print off the information, you can still download the pdf documents.

You can view our Quality Assurance Handbook at quals.pearson.com/BTECQAGuide



Simpler assessment admin

We've also made admin simpler and quicker by improving our BTEC assessment support.

From September 2016 we're introducing

- **Early contact** with a single standards verifier for your subject - to help ensure you have consistent support and advice from a single subject expert earlier so you can start working together much earlier in the year.
- **Simpler paperwork** – we've reduced paperwork, combined documents and removed repetitive signatures so you can spend less time on admin.
- **Improved sampling** – we'll provide sampling for every programme so you receive early feedback on your samples and be confident in the new standard.

Watch our short video, Supporting BTEC Assessment Teams, summarising all the improvements we've made.

Or, if you prefer, go to quals.pearson.com/BTECAdminGuide for more information.

Support summary

The following shows the range of support and resources available to help delivery of your BTEC Nationals.

Resources available for each sector may differ so please **see web page** for up-to-date information around what's available for your subject area or see detailed unit pages of this guide.

Plan

Get to know your course

- Specifications
- Sample Assessment Materials
- Delivery guides
- Course guides.

Plan your course

- myBTEC course builder and planning tool
- Delivery guides
- Authorised Assignment Briefs
- Getting Ready to Teach events.

Recruit and prepare learners

- Free skills for learning and work activity sheets.

Teach

Gather your FREE teaching resources

- Delivery guides
- Schemes of Work
- Skills for learning and work activity sheets.

Attend FREE training events

- Face-to-face training events
- Online training events.

Assess & Track

Examine the guidance

- Quality Assurance guides
- Standards Verifier and Quality Review visits
- Assessment and assignment writing, and Standardisation training.

Collect examples of the standard

- Authorised Assignment Briefs
- Specimen papers, tasks and sample marked learner work.

Gather assessment templates and tools

- myBTEC assignment briefs and progress tracking.

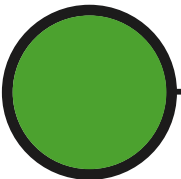
Develop

Develop your expertise

- Launch events
- Getting Ready to Teach Events.

Find out more

quals.pearson.com/BTECNats16and17guide



Your next Steps

1. Download your specifications and sample assessment materials at **quals.pearson.com/BTECNats16and17guide**
2. Browse our FREE resources
3. Order your paid-for resources at:
www.pearsonfe.co.uk/BTECNats16and17guide



Stay in touch

Sign up for updates at **quals.pearson.com/BTECNats16Updateguide** and we'll keep you up-to-date with the latest news.

 Follow us on twitter

@teachBTEC

#ichooseBTEC

Talk to us

For help and advice about your new qualifications and free resources contact our Subject Advisor for Land-based studies:

Land-based Studies

UK: 020 7010 2173

Intl: +44 (0)20 7010 2173

 TeachingLandbasedStudies@pearson.com